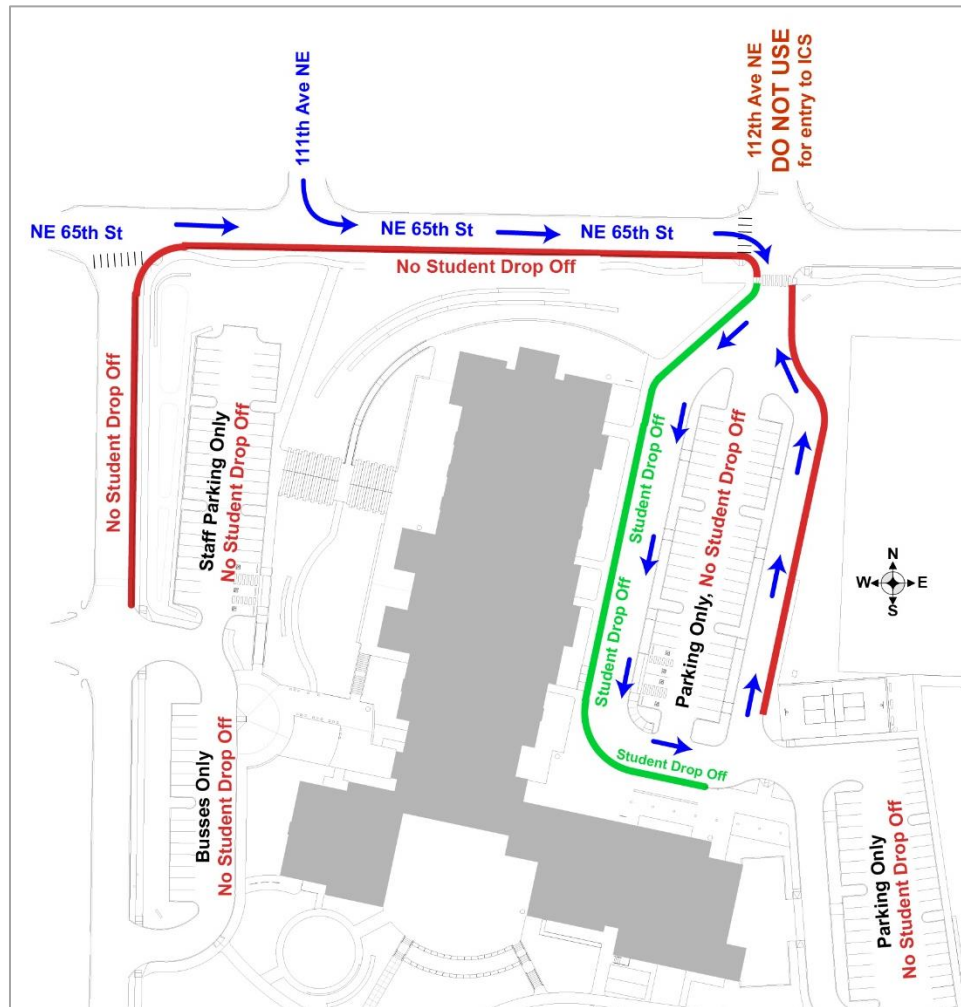


ICS Student Drop Off

The residential area around ICS does not easily handle the large influx of vehicles at the beginning and end of the school day. If we each do our part and follow the suggested entry and exit routes, traffic flows much more smoothly and helps to ensure the safety of our students.



- Please enter campus **ONLY** via a right turn from eastbound NE 65th Street. (Blue route)
- Do **NOT** use 112th Avenue to enter ICS. Although you may save yourself a few seconds by cutting the line, the stop sign gives the right of way to drivers on NE 65th Street. Additionally, traffic on 112th Avenue adds to the congestion at the campus entry and reduces the safety of our students that walk to and from school.
- Please drop off students **ONLY** in the designated drop off area. (Green area)
- The drop off zone extends to the end of the flagpoles. Please pull as far forward as safely possible and then have your student exit once you come to a stop anywhere in the drop off zone. Students waiting in cars until they reach the front of the school clogs the drop off zone.
- Please have your student ready to exit your vehicle once you come to a stop in the drop off zone. Backpacks should be with the student rather than in the trunk.
- Please do NOT drop off students in the parking lots. The only exception is if you are parking so that your student can unload something from your vehicle.